

# Modeling of Liquid Water Distribution at Cathode Gas Flow Channels in Proton Exchange Membrane Fuel Cell - PEMFC

S. Skoda<sup>1</sup>, E. Robalinho<sup>2</sup>, A. Paulino<sup>1</sup>, E.F. Cunha<sup>1</sup>, M. Linardi<sup>1</sup>

<sup>1</sup>Instituto de Pesquisas Energéticas e Nucleares, São Paulo, Brazil

<sup>2</sup>Universidade Nove de Julho, São Paulo, Brazil

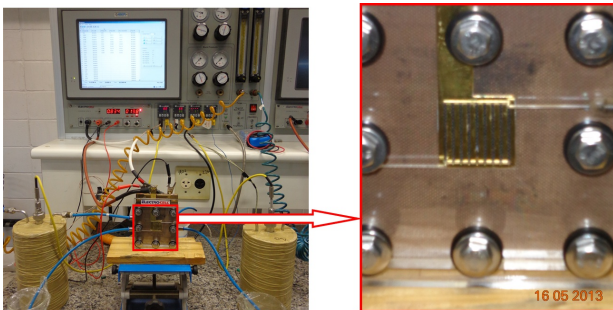
## Abstract

The objective of this study is to determine the locations where liquid water accumulates at cathode gas flow channels, and the corresponding operating conditions. In such way it is possible to mitigate slug flow, responsible for channel blockage and hindering the diffusion of reactants to the catalytic sites. The electrochemical reactions responsible by the performance of PEM fuel cell can be optimized by controlling the operating conditions. The model presented here is a comprehensive PEMFC 3D model, which includes liquid water phase detection along the flow direction, and transport of gaseous species, protons and energy. Computational models of fuel cells have been an important optimization tool to fuel cell development. The experimental data from a transparent-cathode-channels-fuel cell set up (Figure 1) were used to validate the computational model. The investigated parameters were: temperature (25-75oC); flow rates (hydrogen: 200-300 ml/min and oxygen: 100-150 ml/min); and potential (0.1-1.0 V). The software used was COMSOL Multiphysics® and the admitted conditions were: agglomerate model in catalytic region; oxygen as the cathode reactant; steady state; parametric sweep study; direct segregated solver. Modeling results are showed in Figure 2 (experimental) and Figure 3 and 4 (numerical) to illustrate the importance of water detection and management. The idea is to avoid the water accumulation in the cathode layers, which lead to an improvement of PEM fuel cell, since there is not liquid water transport overpotential.

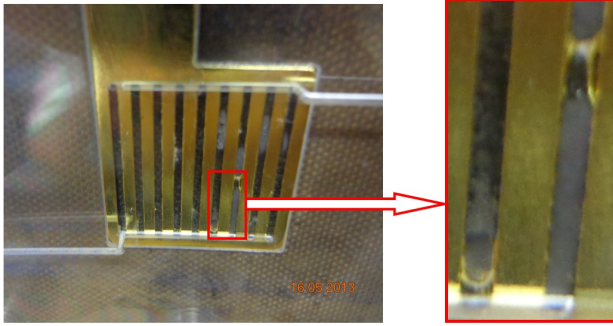
## Reference

- 1.Y.Wang et al., Modeling two-phase flow in PEM fuel cell channels, *Journal of Power Sources*, V.179, pp.603-617 (2008).
- 2.N.P.Siegel et al., A two-dimensional computational model of a PEMFC with liquid water transport, *Journal of Power Sources*, V.128, pp.173-184 (2004).
- 3.Yulong Ding et al., Simulations of two-phase flow distribution in communicating parallel channels for a PEM fuel cell, *International Journal of Multiphase Flow*, V.52, pp.35-45 (2013)
- 4.Ryan Anderson et al., A critical review of two-phase flow in gas flow channels of proton exchange membrane fuel cells, *Journal of Power Sources*, V.195, pp.4531-4553 (2010)
- 5.Xuan Liu et al., Flow dynamic characteristics in flow field of proton exchange membrane fuel cells, *International Journal of Hydrogen Energy*, V.33, pp.1040-1051 (2008)
- 6.R.B.Bird et al., *Transport Phenomena*, John Wiley & Soons, New York (1960)
- 7.W.He et al., Two-phase flow model of the cathode of PEM fuel cells using interdigitated flow fields, *AIChE Journal*, V.46,pp.2053-2064 (2000)
- 8.F.P.Incropera et al., *Fundamentals of Heat and Mass Transfer*, John Wiley & Sons, New York (1996)
- 9.Marcelo Linardi, *Introdução à Ciência e Tecnologia de Células a Combustível*, Art Lieber Editora, São Paulo, SP (2010)
- 10.H.Meng et al., Model of Two-Phase Flow and Flooding Dynamics in Polymer Electrolyte Fuel Cells, *Journal of The Electrochemical Society*, V.152, pp.A1733-A1741 (2005)
- 11.Ugur Pasaogullari et al., Two-phase Modeling and Flooding Prediction of Polymer Electrolyte Fuel Cells, *Journal of The Electrochemical Society*, V.152,pp.A380-A390 (2005)
- 12.S.V.Patankar, *Numerical Heat Transfer and Fluid Flow*, Hemisphere Publishing Corp., New York (1980)

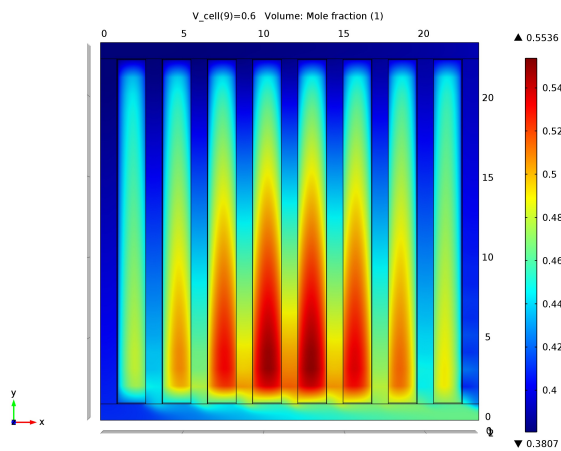
## Figures used in the abstract



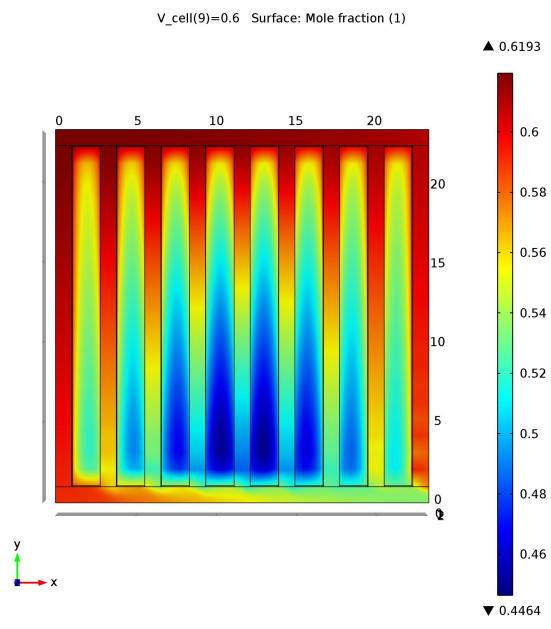
**Figure 1:** Figure 1: Transparent-cathode-channels-fuel cell set up; inset: channels view.



**Figure 2:** Figure 2: Experimental results; inset: slug formation along the cathode channels, 338K, 0.6V.



**Figure 3:** Figure 3. Numerical results: water mole fraction distribution, 338K, 0.6V.



**Figure 4:** Numerical results: oxygen mole fraction distribution, 338K, 0.6V.